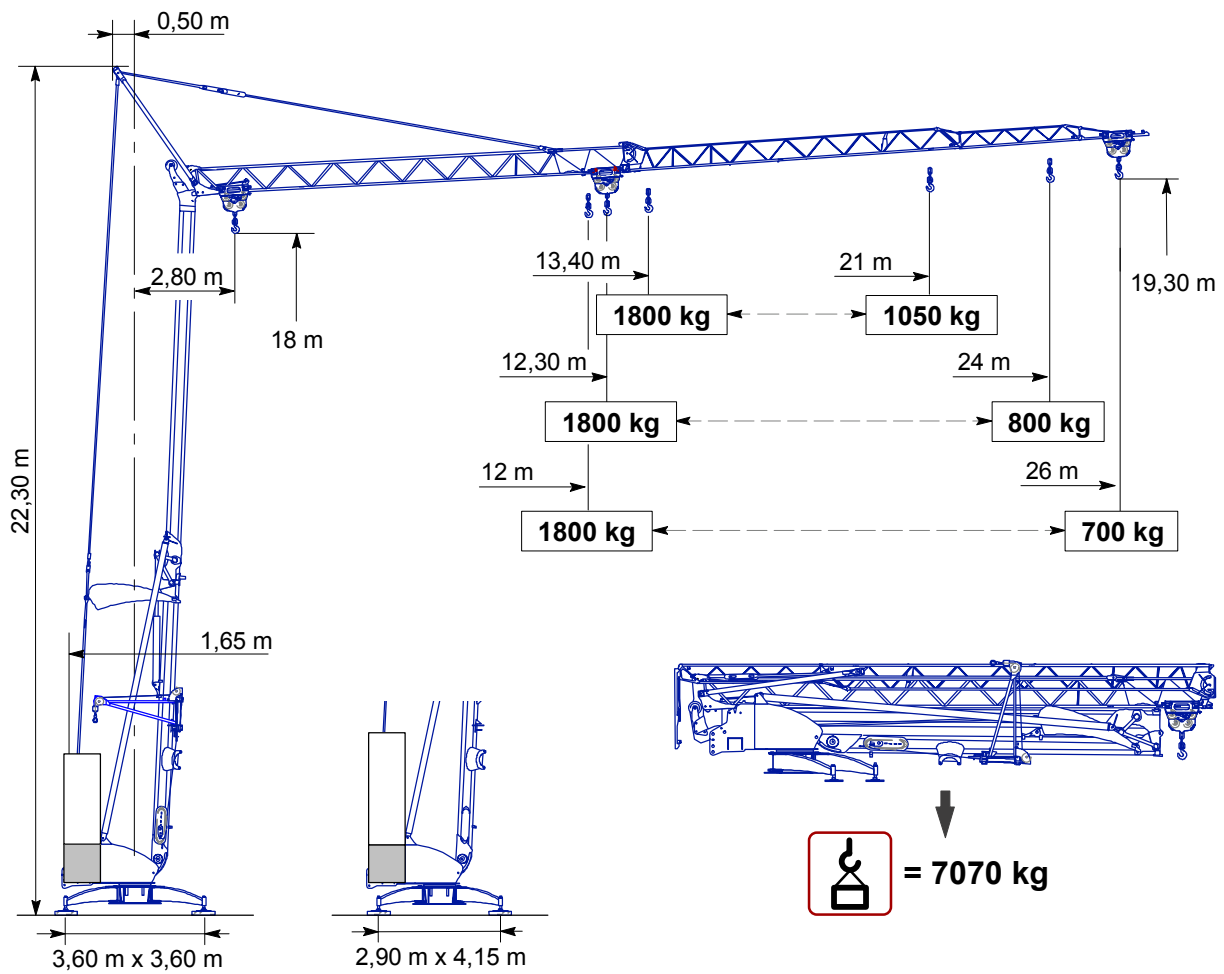
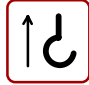
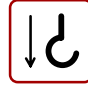
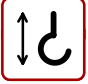
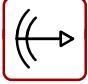
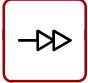
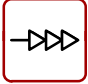
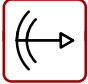

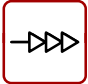
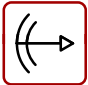
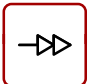
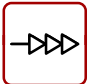




05A - CARATTERISTICHE TECNICHE

1. DATA TECNICA

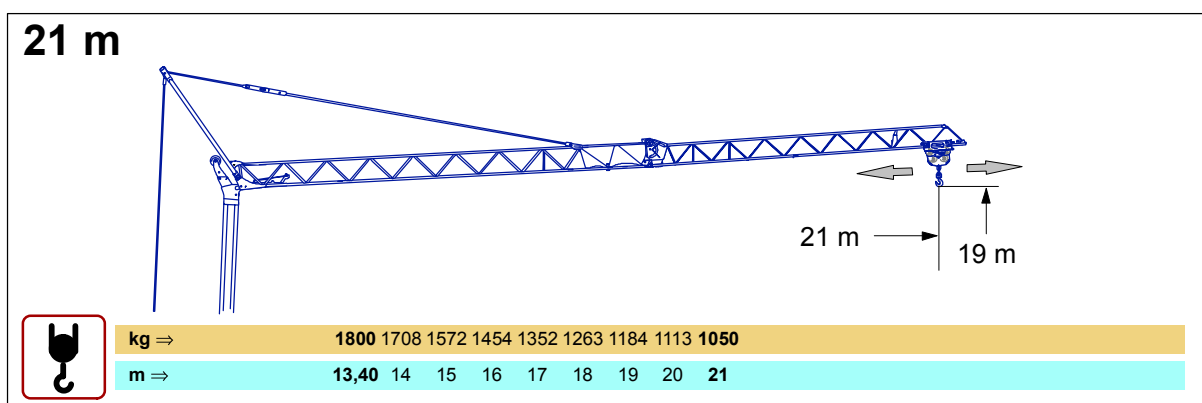
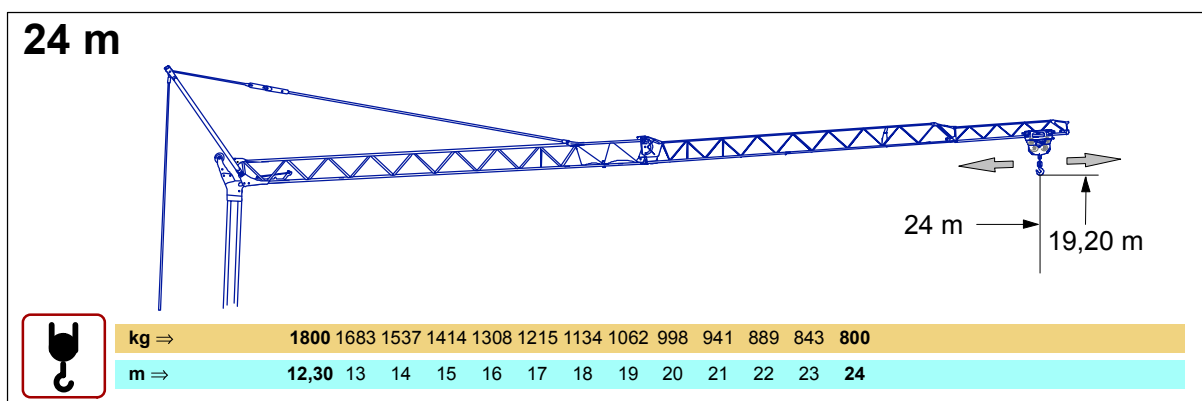
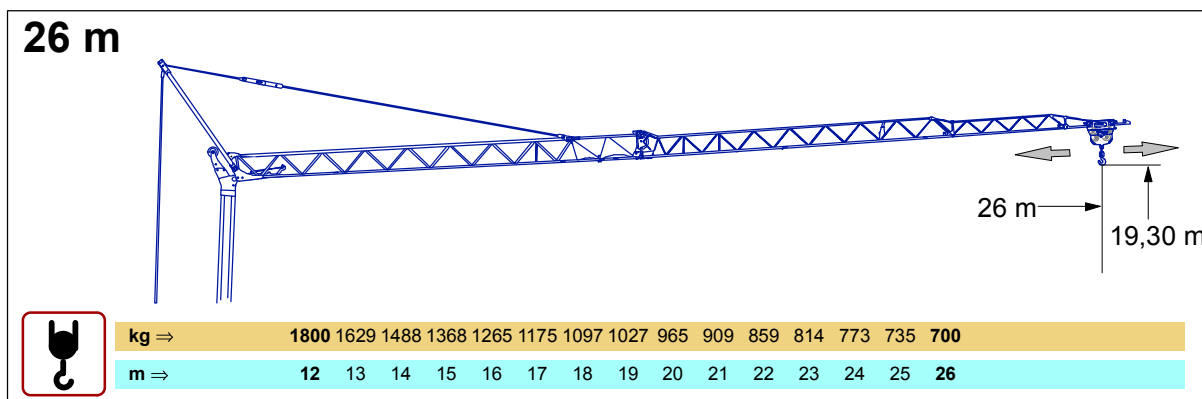
Igo 21 FEM / 1 - A3



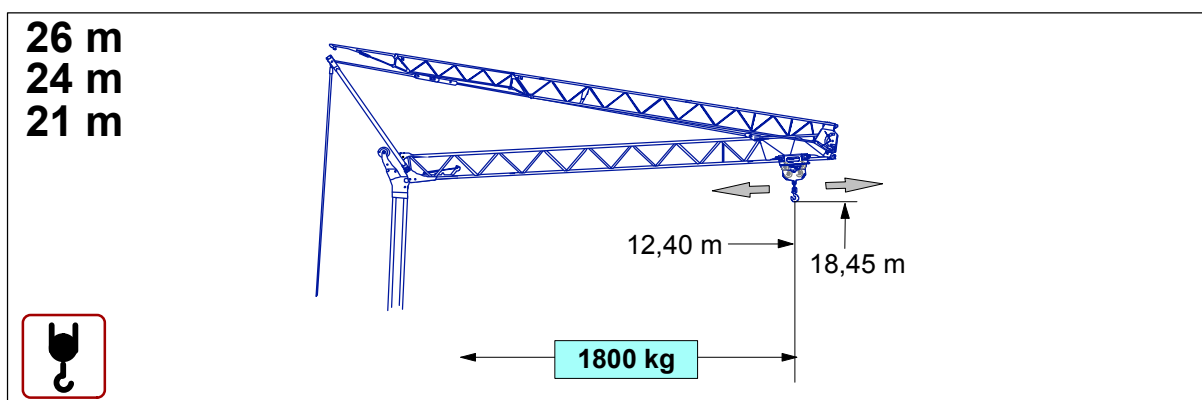
									
	8LVF9 optima	230 V MONO	20 A		1800 kg	3,5 m/min		2,4 kW	
					1800kg	7 m/min	16 m/min		
					700 kg	18 m/min	36 m/min		
			32 A		1800 kg	3,5 m/min		3,8 kW	
					1800 kg	11 m/min	16 m/min		
					700 kg	25 m/min	36 m/min		
		400 V TRI 480 V TRI		1800 kg	3,5 m/min		5,5 kW		
				1800 kg	16 m/min				
				700 kg	36 m/min				
			1DVF4-1			14 -36 m/min (0 □700 kg) 14 -28 m/min (700 □1800 kg)		1,1 kW	
			RVF22			0 □ 1 tr/ m/min		1,1 kW	
		230 V MONO		20 A	230 V (+ 6 % - 10 %) / 50 Hz -60Hz = 4,6 kVA				
		32 A	230 V (+ 6 % - 10 %) / 50 Hz -60Hz= 7,4 kVA						
400 V TRI		400 V (+ 6 % - 10 %) / 50 Hz = 11 kVA							
480 V TRI		480 V (+ 6 % - 10 %) / 60 Hz = 11 kVA							

2. DIAGRAMME DEI CARICHI

Braccio orizzontale



Braccio orizzontale ripiegato



Braccio inclinato 20°

